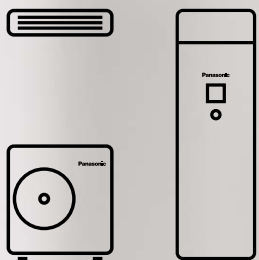


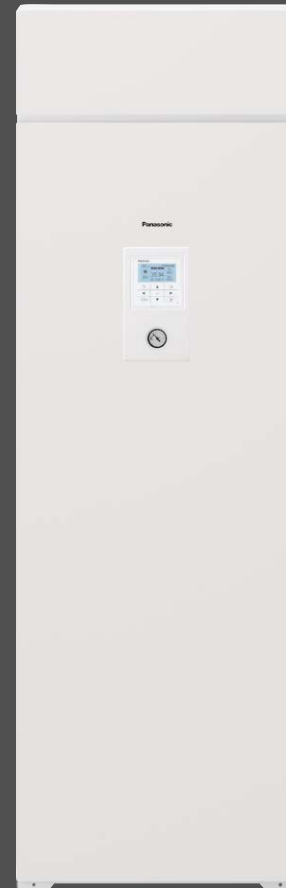
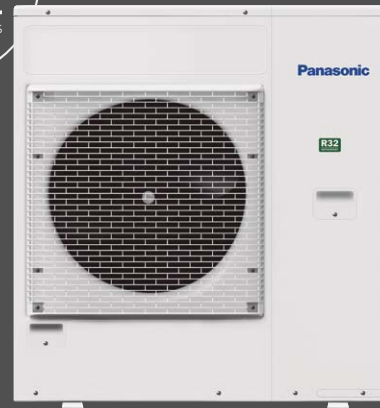
# Panasonic

## Aquarea EcoFleX Naturally Efficient



AQUAREA

# Panasonic



AQUAREA

With Aquarea up to 80% of the heat energy required is taken from the ambient air



## Aquarea EcoFlex — Naturally Efficient

Leveraging heat pump technology and our unique expertise, Panasonic has been working for many years to help realise a sustainable society and enrich people's lives. The wide range of Aquarea products makes possible optimum solutions that are tailored to individual lifestyles while offering outstanding environmental performance.

**Aquarea EcoFlex: Heating, cooling and domestic hot water systems for a green future.**



Adapts to your home



Energy saving means money savings



Adapts to your needs



More inside, more space for you

## Aquarea EcoFleX: 2-in-1 - Sustainable and efficient comfort all year long

New Aquarea EcoFleX is a groundbreaking heat pump that connects an air ducted unit with nanoe™ X technology providing heat recovery hot water, space heating, space cooling and cleaner air. Outstanding efficiency and energy savings with low CO<sub>2</sub> emissions.

### Smart Comfort

Smart convenience. Energy savings, comfort and control from anywhere.

Wi-Fi adapters included for instant connectivity via Panasonic Comfort Cloud App, to enable smart control and energy consumption monitoring.

### nanoe™ X technology to improve protection 24/7

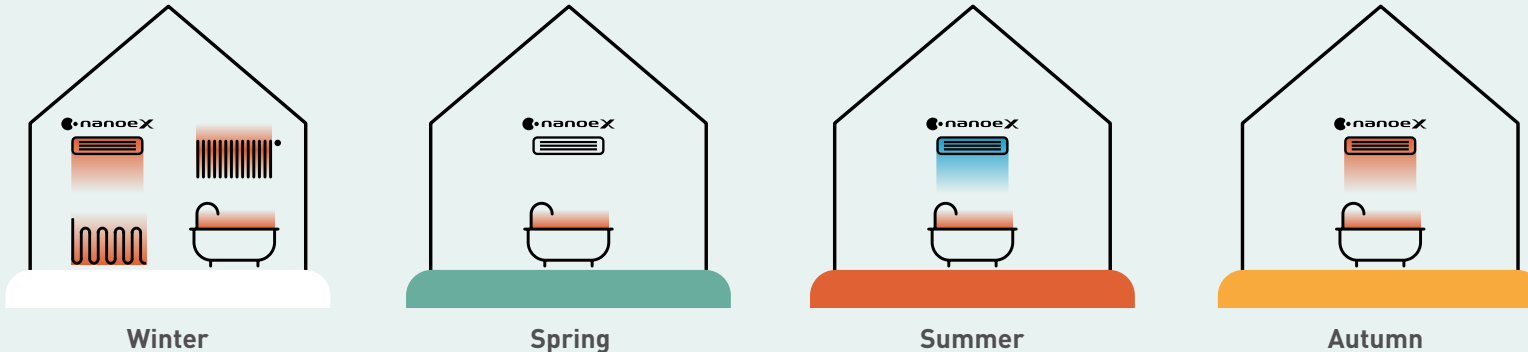
This advanced technology utilises hydroxyl radicals, which inhibit the growth of certain pollutants such as allergens, bacteria, viruses, moulds, odours, and certain hazardous substances. This naturally occurring process improves the protection inside a room 24/7.



Aquarea EcoFleX is equipped standard with Wi-Fi to enable smart control and energy consumption monitoring.



## Aquarea EcoFleX: Savings and comfort all year long



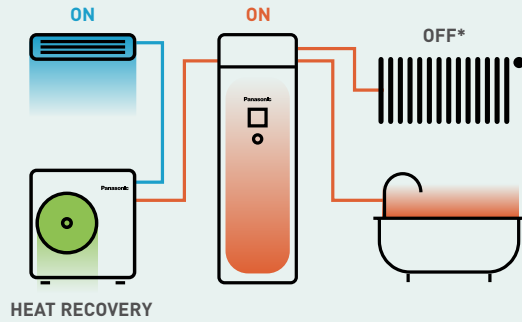
Find out more about Comfort Cloud

Download on the:





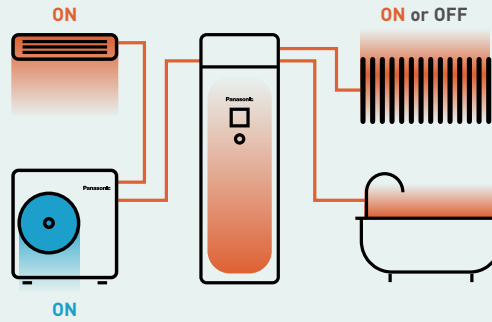
## Aquarea EcoFleX: Unique technology that drives the system



### Heat recovery.

#### Cooling (Air) + Domestic Hot Water.

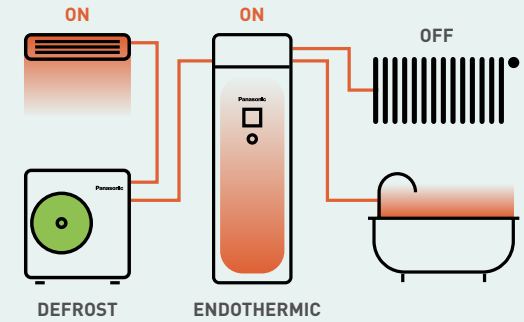
Heat exchange that took place in outdoor unit now is carried out in the water heater.



### Bi-heating.

#### Heating (Air) + Heating (Radiators or Floor heating) or Domestic Hot Water.

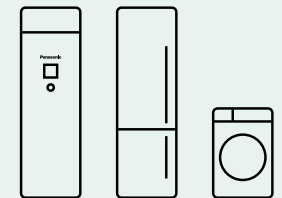
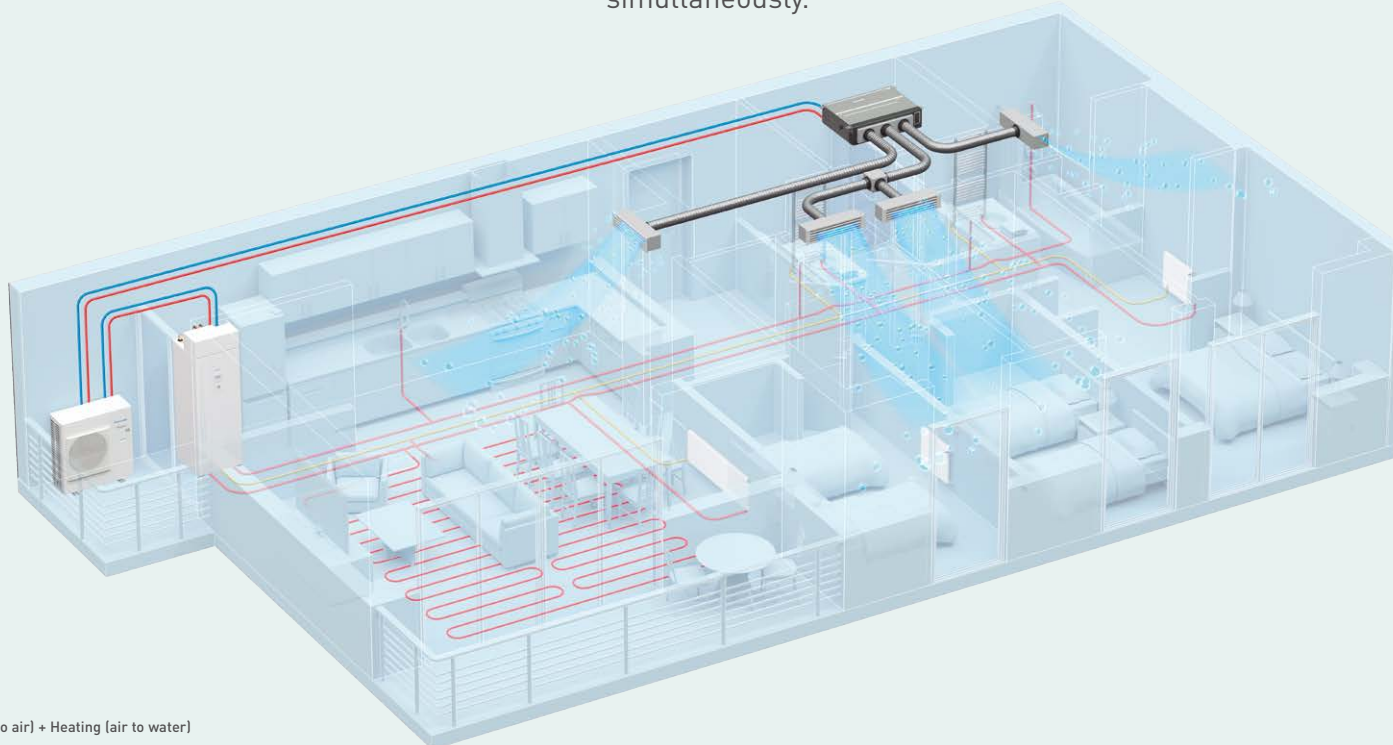
Heat from the compressor is supplied for heating and Domestic Hot Water simultaneously.



### Non-stop heating.

#### Heating (Air) continuous operation.

Use heat from tank to defrost and heat simultaneously.



**Fits beautifully in any kitchen, small laundry space, or any other desired area.**

The same depth as a regular refrigerator/ washing machine. Deep: 600 mm / Wide: 598 mm

\*Heat recovery is also possible with Cooling (air to air) + Heating (air to water)



**Panasonic**

## Aquarea EcoFleX Air to water. Compact, yet easy to maintain

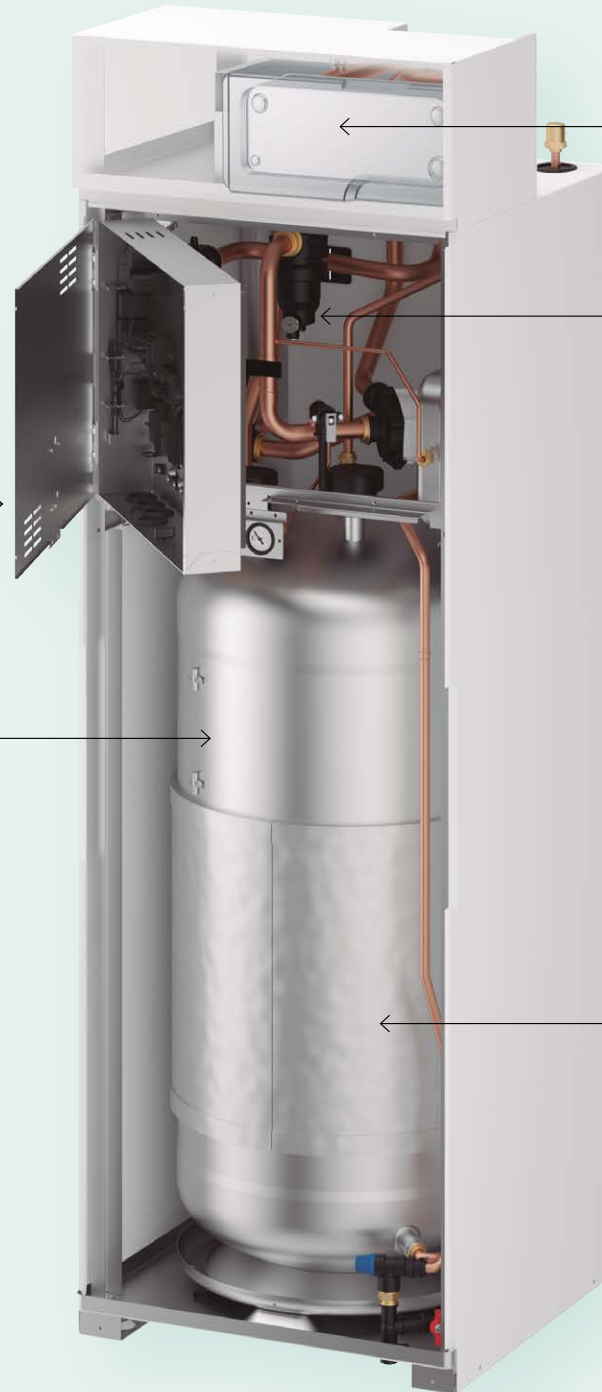
Tank unit + heat exchanger box to produce domestic hot water and space heating using radiators or floor heating.

### Maintained serviceability.

- Easy maintenance concept
- Access to hydraulic parts thanks to door opening mechanism
- No buffer tank required, reducing space, cost and installation time

### Slim indoor unit with big tank capacity.

Built-in 185 L water tank in a slim deep: 600 mm / wide: 598 mm indoor unit housing.



### Heat exchanger box structure to mitigate R32 refrigerant restrictions, flexible installation.

Water heat exchanger is designed above the top plate to comply with installation area regulation for products using large amounts of R32 refrigerant.

### Improved water filter for less maintenance.

Superior dust removal capacity of the water filter. Less frequent filter cleaning means more convenience.

### U-Vacua insulation technology.

Panasonic U-Vacua™ is a high performance vacuum insulation panel with very low thermal conductivity, that performs about 19 times better than standard urethane foam.



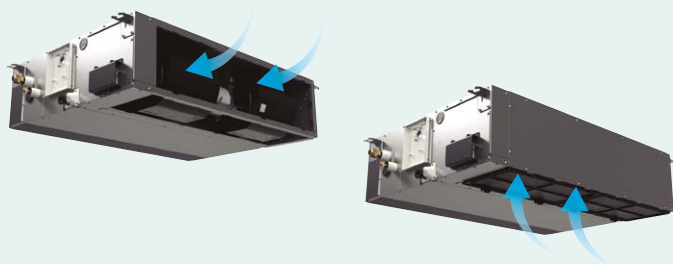
## Aquarea EcoFleX Air heating or cooling and cleaner air

Aquarea EcoFleX ducted unit has been designed to provide better comfort and flexibility.



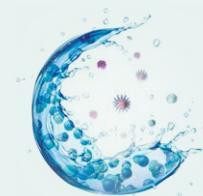
### Selectable inlet air position.

Inlet air position may be adjusted by means of a removable panel, to allow rear or bottom entry, depending on the duct installation.



### Ideal for living spaces.

- Static pressure level: 10 - 150 Pa
- Compact body: Only 250 mm high
- Rated up to SEER / SCOP class A++
- Low noise operation (22 ~ 29 dB(A))
- DC fan motor, built-in drain pump



### Superior air quality.

Standard equipped with nanoe™ X, a unique technology that cleans indoor air.



## Bringing nature's balance indoors

### nanoe™ X, technology with the benefits of hydroxyl radicals.

Abundant in nature, hydroxyl radicals (also known as OH radicals) have the capacity to inhibit pollutants, viruses, and bacteria to clean and deodorise. nanoe™ X technology can bring these incredible benefits indoors so that hard surfaces, soft furnishings, and the indoor environment can be a cleaner and more pleasant place to be.

#### Capacity to inhibit 5 types of pollutants



Bacteria and viruses



Mould



Allergens



Pollen



Hazardous substances

#### Deodorises



Odours

#### Moisturises



Skin and hair



Find out more about nanoe™ X



### nanoe™ X: improving protection 24/7

Acts to clean your air, so that the indoor environment can be a cleaner and more pleasant place to be all day long. nanoe™ X works together with heating or cooling function when you are at home and can work independently when you are away.

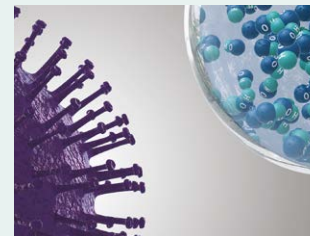
Give the air conditioning the strength to increase the protection at home with nanoe™ X technology and convenient control via the Panasonic Comfort Cloud App.



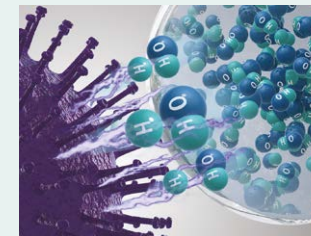
### Panasonic's nanoe™ X technology takes this a step further and brings nature's detergent – hydroxyl radicals – indoors to help create an ideal environment

Thanks to the nanoe™ X properties, several types of pollutants can be inhibited such as certain types of bacteria, viruses, mould, allergens, pollen and certain hazardous substances.

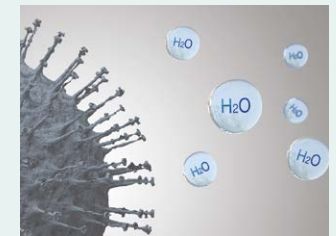
1 / nanoe™ X reliably reaches pollutants.



2 / Hydroxyl radicals denature pollutants' proteins.



3 / Pollutants activity is inhibited.



The nanoe™ X performance varies depending on the room size, environment and usage and it may take several hours to reach the full effect. nanoe™ X is not a medical device, local regulations on building design and sanitary recommendations must be followed. Test results conducted under controlled laboratory conditions. Performance of nanoe™ X might differ in real life environment.



**nanoe™ X technology  
verified against SARS-CoV2**

Virus SARS-CoV-2: 99,9 % inhibited. Test conducted by TEXCELL (France), using a gauze saturated with SARS-CoV-2 virus solution exposed to a generator of nanoe™ X in a 45L box for 2 hours. Performance of nanoe™ X might differ in real life environment.



**Panasonic**

## Panasonic Comfort Cloud App

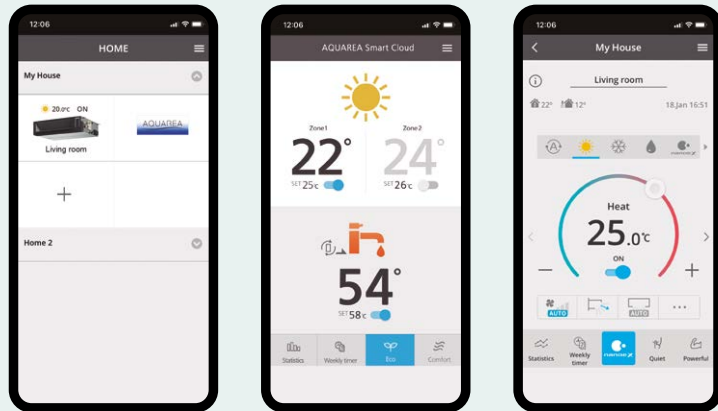
Enhancing comfort and energy management, the advanced control enables to fully manage Aquarea EcoFlex heat pump, using a mobile device.

### Heat recovery visualization

The energy consumption of the heat pump can be monitored, including the heat recovery for DHW production contributing to energy saving.

### The real remote maintenance made simple

Aquarea EcoFlex can be connected to the Aquarea Service Cloud, enabling installers or service partners to take care of their customers' heat pump remotely.



Download on the:



Find out more about Comfort Cloud





Maximise comfort  
while managing  
energy consumption  
from anywhere, 24/7.

**Aquarea EcoFlex: The peak of comfort, efficiency and low energy costs**



**Refrigerant gas R32**  
Our heat pumps containing the refrigerant R32 show a drastic reduction in the value of Global Warming Potential (GWP).



**Better efficiency and value for medium temperature applications.**  
Energy efficiency class up to A++ in a scale from A+++ to D.



**Better efficiency and value for low temperature applications.**  
Energy efficiency class up to A+++ in a scale from A+++ to D.



**Better efficiency and value for domestic hot water.**  
Energy efficiency class up to A+ in a scale from A+ to F.



**Inverter Plus.**  
Panasonic Inverter Plus compressors are designed to achieve outstanding level of performance.



**A class water pump.**  
Aquarea are built-in with A class energy efficiency water pump. High efficiency circulating the water in the heating installation.



**Down to -15 °C in heating mode.**  
The heat pumps work in heating mode with an outdoor temperature is as low as -15 °C.



**Better efficiency and value for domestic hot water.**  
Energy efficiency class up to A+ in a scale from A+ to F.



**Water filter with magnet.**  
Easy access and fast clip technology for J Generation. Water filter only for H Generation.



**Water flow sensor.**  
Included on J and H Generation.



**Heat Recovery Port.**



**5 years compressor warranty.**  
We guarantee the outdoor unit compressors in the entire range for five years.



**Advanced control.**  
Remote controller with full dotted 3,5" wide back light screen. Menu with 17 available languages easy to use for installer and user. Included on J and H Generation.



**Included Wi-Fi adapter.**  
A next generation system providing user-friendly remote control of air conditioning or heat pump units from everywhere, using a simple Android™ or iOS smartphone, tablet or PC via the internet.






Aquarea J and H Generation heat pumps in combination with the optional PCB CZ-NSP4 hold the SG Ready Label (Smart Grid Ready Label), given by Bundesverband Wärmepumpe (German Heat Pump Association). This Label shows the real capacity of Aquarea to be connected in an intelligent grid control.

**Why Panasonic?**

Panasonic has more than 60 years of Heat Pump experience, having produced an exceptional amount of compressors. Quality is what Panasonic stands for and this is a key factor for succeeding in the European market. As a member of the European Heat Pump Association, the production of Aquarea in Europe and maintaining high security protocols in European servers for the Aquarea Smart Cloud, makes Panasonic a trusted heating partner.

**Aquarea EcoFlex  
Technical Data**

<b>Air to water WH-ADF0309J3E5CM</b>  	Heating capacity / COP (A +7 °C, W 35 °C)		kW / COP	8,00/4,21	
	Heating capacity / COP (A +7 °C, W 55 °C)		kW / COP	8,00/2,81	
	Heating capacity / COP (A +2 °C, W 35 °C)		kW / COP	6,70/3,25	
	Heating capacity / COP (A +2 °C, W 55 °C)		kW / COP	6,00/2,08	
	Heating capacity / COP (A -7 °C, W 35 °C)		kW / COP	5,60/2,84	
	Heating capacity / COP (A -7 °C, W 55 °C)		kW / COP	5,30/1,91	
	Cooling capacity / EER (A 35 °C, W 7 °C)		kW / EER	—	
	Cooling capacity / EER (A 35 °C, W 18 °C)		kW / EER	—	
	Heating average climate (W 35 °C / W 55 °C)	Seasonal energy efficiency	SCOP (η <sub>s</sub> %)		4,00/3,20(157/125)
		Energy class <sup>1)</sup>	A+++ to D		A++/A++
	Heating warm climate (W 35 °C / W 55 °C)	Seasonal energy efficiency	SCOP (η <sub>s</sub> %)		5,69/3,69(224/145)
		Energy class <sup>1)</sup>	A+++ to D		A+++/A++
	Heating cold climate (W 35 °C / W 55 °C)	Seasonal energy efficiency	SCOP (η <sub>s</sub> %)		3,61/2,80(141/109)
		Energy class <sup>1)</sup>	A+++ to D		A+/A+
	Sound pressure	Heat / Cool		dB(A)	28 / —
	Dimension / Net weight	H x W x D		mm / kg	1880 x 598 x 600 / 108
	Capacity of integrated electric heater			kW	3,00
	Water volume			L	185
	Maximum DHW temperature			°C	65
	Heating water flow (ΔT=5 K, 35 °C)			L/min	22,90
	Tapping profile according EN16147				L
	DHW tank ERP efficiency average / warm / cold <sup>2)</sup>			A+ to F	A/A+/A
	DHW tank ERP average climate η / COPdhw			η <sub>wh</sub> % / COPdhw	104/2,60
	DHW tank ERP warm climate η / COPdhw			η <sub>wh</sub> % / COPdhw	134/3,35
	DHW tank ERP cold climate η / COPdhw			η <sub>wh</sub> % / COPdhw	92/2,30
Heat recovery capacity (DHW 55 °C)			kW	7,10+9,00	
Heat recovery input power (DHW 55 °C)			kW	3,15	
Heat recovery COP (DHW 55 °C)				5,11	
Water outlet			°C	20 – 55	
<b>Air to air S-71WF3E</b>  	Cooling capacity	Nominal	kW	7,10	
	EER <sup>3)</sup>	Nominal	W/W	3,40	
	<b>SEER <sup>4)</sup></b>			<b>5,60 A+</b>	
	Pdesign (cooling)			7,10	
	Heating capacity	Nominal	kW	7,10	
	COP <sup>3)</sup>	Nominal	W/W	3,90	
	<b>SCOP <sup>4)</sup></b>			<b>3,90 A</b>	
	Pdesign at -10 °C			4,80	
	External static pressure <sup>5)</sup>			Pa	30(10 - 150)
	Air flow			m <sup>3</sup> /min	22,7
	Sound pressure <sup>6)</sup>	Cool / Heat (Hi)		dB(A)	34/34
	Sound power <sup>7)</sup>	Cool / Heat (Hi)		dB(A)	57/57
	Dimension / Net weight	H x W x D		mm / kg	250 x 1000 x 730 / 30
	nanoe X Generator				Mark2
	<b>Outdoor unit CU-2WZ71YBE5</b>  	Sound pressure	Cool / Heat (air to air)	dB(A)	49/49
		Sound power <sup>7)</sup>	Cool / Heat (air to air)	dB(A)	68/67
		Sound pressure	Heat (air to water)	dB(A)	51
Sound power <sup>8)</sup>		Heat (air to water)	dB(A)	61	
Dimension / Net weight		H x W x D		mm / kg	999 x 940 x 340 / 82
Refrigerant (R32) / CO <sub>2</sub> Eq.				kg / T	2,40/1,62
Piping diameter		Liquid / Gas		Inch (mm)	1/4(6,35)/1/2(12,70)
Pipe length range / Elevation difference (in / out)				m / m	35/30
Pipe length for additional gas / Additional gas amount				m / g/m	30/20
Operating range - outdoor ambient		Heat (air to air)	°C		-15 ~ +24
		Cool (air to air)	°C		-10 ~ +46
	Heat (air to water)	°C		-15 ~ +35	
	Heat recovery (floor / DHW)	°C		+10 ~ +35/+10 ~ +46	

1) Scale from A+++ to D. 2) Scale from A+ to F. 3) EER and COP calculation is based in accordance to EN14511. 4) SEER and SCOP is calculated based on values of EU/626/2011. 5) Medium external static pressure setting from factory. 6) The sound pressure of the units shows the value measured of the position 1,5 m below the unit. The sound pressure is measured in accordance with Eurovent 6/C/006-97 specification. 7) Sound power is measured in accordance with EN14511 and EN12102-1:2017 at +7 °C. 8) Sound power in accordance to 811/2013, 813/2013 and EN12102-1:2017 at +7 °C.

Due to the ongoing innovation of our products, the specifications of this catalogue are valid barring typographic errors, and may be subject to minor modifications by the manufacturer without prior warning in order to improve the product. The total or partial reproduction of this catalogue is prohibited without the express authorisation of Panasonic Marketing Europe GmbH.

Preuzeto sa  KlimaUredjaji.com

# Panasonic®

To find out how Panasonic cares for you,  
log on to: [www.aircon.panasonic.eu](http://www.aircon.panasonic.eu)

Panasonic Marketing Europe GmbH  
Panasonic Air Conditioning  
Hagenauer Strasse 43, 65203 Wiesbaden, Germany

EU-LFTA0EC0FLEX0222

[www.eggeasociati.net](http://www.eggeasociati.net)